



# LWGA Newsletter

Volume 17 Issue 1

Fall 2015



## FROM THE PRESIDENT

Greetings from your President:

I can't believe that this year is coming to an end. Our membership renewal has passed and I would like to extend a personal welcome to all of our new members. And to those of you who are going to the Get Away at Amelia Island, I'll look forward to being with you at our inaugural tournament of the new year.

The Dr. Alligator tournament this year raised approximately \$8,200 for the Hilton Head Hospital Women's Auxiliary. The tournament was held at Wexford. I would like to thank Linda Mikkelson for all of her hard work as our Dr. Alligator LWGA rep.

Suki Brainard and Jan Alpert have done a wonderful job as your Tournament Committee. These ladies have stepped up to the plate and have made our tournaments enjoyable and efficient. I am happy to say that pace of play has significantly improved and most tournaments were played at a 4 hour pace.

Elaine Shayne has been working very hard to secure another wonderful tournament venue for the coming year. Please remember that there is a 4 credit minimum for the league but we hope that you will participate in as many tournaments that you can.

I would like to thank all of the board members for not only the support that made my job easier but for all that they have done to keep this organization running smoothly. They are: Sandy Wooster (Vice-President), Cheryl Smith (Secretary), Kathy LaBonte (Treasurer), Susan Brainard & Jan Alpert (Tournament Committee), Lori Delaney (Membership), Nancy Sain, (Publications), Elaine Shayne (Handicap/Tournament Administration), Mary Jones (Social Prizes), Terri Forde & Susie Sutton (Special Events), Linda Mikkelson (Dr. Alligator Coordinator), and Lori Witz (Past President/Nominating Committee).

I would like to recognize Joyce Archibald (Walrab) who passed away on Sunday, August 29, 2015. Joyce was an active woman all her life, a golfer for almost 40 years, she had six holes-in-one, a tremendous feat. Joyce was also the president for LWGA on 2 separate occasions.

I close in saying that it has been an honor and pleasure serving as your president this past year. It is a wonderful organization with an outstanding membership. I look forward to seeing you all in future tournaments. Have a wonderful holiday season and I will see you at the Annual Brunch in January at Belfair.

Sincerely,  
Natalie Buontempo



***Natalie Buontempo***  
***PRESIDENT***

## TOURNAMENT NEWS

It is hard to believe that the 2015 LWGA season concludes with the Member-Member/Member-Guest Tournament at Callawassie on October 19. November is the start of our new LWGA year.

It is my hope that participation will increase next year. Of the 9 tournaments held since January 2015 we have had only 2 tournaments with a full field of 92. One of these was the Pro-Appreciation Tournament which included 23 pros and 69 LWGA members. Our average participation has been 69 players. If you played the minimum to receive your 4 credits, please make an effort to play one more tournament in 2016. **The future of LWGA depends on everyone's participation.** We can't expect our member clubs to give up their golf courses for very small fields.

The Stroke Play Championship, September 22 & 23, at The Golf Club, was the smallest field with only 30 players. However, all 30 players completed 2 days and posted their scores. Nobody "no carded"! Congratulations to all of you who played. I am listing them and I encourage you to ask them if they enjoyed this tournament! Gail Andersen, Lindsey Barnett, Louise Bellace, Heather Cherichella, Joyce Dalton, Sheila Divvens, Susan Foster, Hiltrud Gabler, Linda Gettings, Kay Hayes, Charlotte Jeffrey, Saruta Jerin, Anita Jewell, Carole Johnson, Ruth Larson, Paula Manuele, Robin McPhillips, Linda Mikkelson, Cheryl Moore, Cynthia Odell, Donna Pagliarulo, Linda Reeves, Renee Rezzatano, Nancy Sain, Meg Scott, Helen Smith, Sharon Son-Hing, Donna Watson, Haila Wilson and Lori Witz.

Congratulations to the Stroke Play Championship Winners:

Flight One – Renee Rezzetano, winner; Sharon Son-Hing, runner-up

Flight Two – Helen Smith, winner; Cynthia Odell, runner-up; Nancy Sain, third place

Flight Three – Linda Reeves, winner; Linda Gettings, runner-up; Paula Manuele, third place

Fourth Flight – Anita Jewell, winner; Cheryl Moore, runner-up



I would also like to thank my LWGA friends who have volunteered to help whenever and wherever they were needed. They are: Jan Alpert, Dori Barnes, Anne Bendiske, Moe Blasdel, Penny Calf, Rica Comstock, Jo Friebely, Linda Mikkelson, Jan Muhrenberg, Melissa Nieberding, Donna Pagliarulo, Chris Putnam and Cheryl Smith. A little help goes a long way in easing the burden on the tournament chairman and insuring a well run tournament. Thank You for helping! Thanks also to President Natalie Buontempo who has been my advisor and tutor throughout the year. It has been a learning experience for me and without her support I could not have done the job.

Elaine Shayne, LWGA Tournament Administrator, has put together a great schedule of venues for next year. The 2016 schedule is not posted yet but remember to check the website for the most up to date information.

Suki Brainard, Tournament Chairman

## MEMBERSHIP

### **From the Membership Chair**

Our annual enrollment period is now complete. We will begin the new 2016 season with 251 LWGA members. We are pleased to welcome the following 28 NEW Members to LWGA!!

Belfair -	Janine Propst
Berkeley Hall -	Karen Cram, Sandy Davis, Celina Echague, Lynn McQuay
Colleton River -	Janice Eisert, Wendy Hall
The Golf Club -	Carol Pistolessi, Lori Schmidt, Lorie Silverman
Hampton Hall -	Patty Betz, Jan McLain
Long Cove –	Sharon Christmann, Lynn Newcomer
Moss Creek -	Debra Lowman
Oldfield -	Marti Flickinger, Sandi Shineman
Palmetto Dunes -	Jennifer Hebble, Isabelle Van Gorp
Palmetto Hall -	Jan Kirk, Denise Sottolare
Sea Pines -	Joanne Barbara, Lisa Cadiz
Spring Island -	Suzn Stewart
Sun City -	Berenice Fedder, Rebecca Nelson, Cyndi Whalen
Wexford -	Helen Aiken

Please join me in welcoming these new members by reaching out and offering any help through our process of entering tournaments, encouraging attendance to our Annual Brunch on January 15, and navigating our website.

Lori Delaney  
2015 Membership Chair

## GETAWAY

Our 2015 Getaway was held on November 1-3 for the second year at the Amelia Island Plantation. The weather was beautiful and all enjoyed the golf, beach and camaraderie. We had 83 ladies in attendance representing 16 clubs with large showings from Fripp, Long Cove and Berkeley Hall. Three flights of 14 teams in each competed for 1 gross and 4 net prizes in each flight. First Gross and First Net winners for each flight are pictured below.

We are also pleased, at this time, to announce the date and location of our 2016 event: Ponte Vedra Beach Resorts—Oct 31 through Nov. 2 (Monday-Wednesday), playing the Ocean and Lagoon courses. Much more to come on this event later but for now **SAVE THE DATE!!**



1st Gross, Amelia Plantation Flight  
Karen Ferree and Terrie Allemang



1st Net, Amelia Plantation Flight  
Lori Delaney and Lori Witz



1st Gross, Oak Marsh Flight  
Barb Sommers and Becky Busa



1st Net, Oak Marsh Flight  
Terri Savory and Linda Gettings

PAST PRESIDENT

**I am pleased to present the 2016 Slate for LWGA's Board of Governors.**

**This slate will be approved and voted upon by attending LWGA members during our January General Meeting/Awards Brunch at Belfair Country Club.**

**I want to thank my committee for assisting me with this endeavor. They are:**

**Gail Kraemer,**

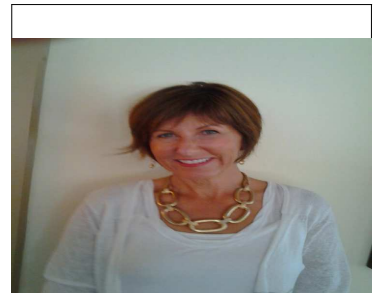
**Brenda Lozan,**

**Dee Lyon,**

**and Mary Rydzal.**

**You may view the slate on the next page.**

**Lori Witz  
Past President**



***LORI WITZ***  
***Past President***

**Recommended Slate  
for LWGA 2016  
Board of Governors and Committee Chairs**

**PRESIDENT**

**Susan Brainard ('16-'17)**

**VICE PRESIDENT**

**Margaret Scott ('16-'18)**

**SECRETARY**

**Cheryl Smith ('16)**

**TREASURER**

**Brenda Lozan ('16-'18)**

**COMMUNICATIONS CHAIR**

**Nancy Sain ('16-'17)**

**TOURNAMENT CHAIR**

**Jan Alpert ('16-'17)**

**ASSISTANT TOURNAMENT CHAIR**

**Chris Putnam ('16-17)**

**MEMBERSHIP CHAIR**

**Kathy LaBonte ('16-'17)**

**HANDICAP/TOURNAMENT ADMINISTRATION**

**Elaine Shayne ('16)**

**Susan Foster (co-chair) ('16-'18)**

**SOCIAL/PRIZES**

**Mary Jones ('16-'17)**

**SPECIAL EVENTS**

**Susie Sutton ('16)**

**PAST PRESIDENT/EX-OFFICIO**

**Natalie Buontempo ('16)**







